

Critical properties of the unconventional spin-Peierls system TiOBr

J. P. Clancy,¹ B. D. Gaulin,^{1,2} and F. C. Chou³

¹*Department of Physics and Astronomy, McMaster University, Hamilton, Ontario, Canada L8S 4M1*

²*Canadian Institute for Advanced Research, 180 Dundas Street West, Toronto, Ontario, Canada M5G 1Z8*

³*Center for Condensed Matter Sciences, National Taiwan University, Taipei 106, Taiwan*

(Received 14 August 2009; revised manuscript received 14 December 2009; published 20 January 2010)

We have performed detailed x-ray scattering measurements on single crystals of the spin-Peierls compound TiOBr in order to study the critical properties of the transition between the incommensurate spin-Peierls state and the paramagnetic state at $T_{C2} \sim 48$ K. We have determined a value of the critical exponent β which is consistent with the conventional three-dimensional universality classes, in contrast with earlier results reported for TiOBr and TiOCl. Using a simple power-law-fit function we demonstrate that the asymptotic critical regime in TiOBr is quite narrow, and obtain a value of $\beta_{asy} = 0.32 \pm 0.03$ in the asymptotic limit. A power-law-fit function which includes the first-order correction-to-scaling confluent singularity term can be used to account for data outside the asymptotic regime, yielding a more robust value of $\beta_{avg} = 0.39 \pm 0.05$. We observe no evidence of commensurate fluctuations above T_{C1} in TiOBr, unlike its isostructural sister compound TiOCl. In addition, we find that the incommensurate structure between T_{C1} and T_{C2} is shifted in \mathbf{Q} space relative to the commensurate structure below T_{C1} .

DOI: [10.1103/PhysRevB.81.024411](https://doi.org/10.1103/PhysRevB.81.024411)

PACS number(s): 75.40.Cx, 78.70.Ck, 64.60.F-

I. INTRODUCTION

The physics of low-dimensional quantum magnets is a very interesting and topical area of research. These systems exhibit a broad range of novel physical properties and exotic quantum ground states, ranging from spin-Peierls and Haldane gap behavior in quasi-one-dimensional (1D) systems to high-temperature superconductivity in quasi-two-dimensional (2D) systems. Spin-Peierls systems in particular have undergone a recent renaissance due to the discovery of two new, and somewhat unconventional, inorganic spin-Peierls compounds, the titanium oxyhalides TiOBr and TiOCl.

Spin-Peierls behavior arises in quasi-1D systems which possess a combination of spin 1/2 magnetic moments, short-range antiferromagnetic interactions, and strong magnetoelastic coupling. At low temperatures these systems undergo a spin-Peierls phase transition which is characterized by dimerization of the lattice and the development of a nonmagnetic singlet ground state. As the presence of interchain interactions typically drives quasi-1D systems towards long-range magnetic order, only a select family of compounds with particularly strong spin-phonon coupling have been found to exhibit a spin-Peierls transition. The first experimental realization of the spin-Peierls transition was discovered in organic charge-transfer compounds, such as TTF-CuBDT (Ref. 1) and MEM-(TCNQ)₂.² It was considerably later that spin-Peierls behavior was observed in CuGeO₃, the first inorganic spin-Peierls compound ($T_{SP} \sim 14$ K).³

TiOBr and TiOCl, the recently discovered inorganic spin-Peierls compounds based on Ti³⁺, are often referred to as “unconventional” spin-Peierls systems. Unlike standard spin-Peierls systems, which undergo a single continuous phase transition at T_{SP} , the titanium oxyhalides undergo two successive phase transitions upon warming—a first-order transition at T_{C1} between commensurate and incommensurate spin-Peierls states, and a higher-order transition at T_{C2} be-

tween the incommensurate spin-Peierls state and a disordered pseudogap state which extends up to $T^* \sim 135$ K in TiOCl.⁴ In addition, the titanium oxyhalides are unique among spin-Peierls compounds because of their unusually high transition temperatures ($T_{C1}/T_{C2} \sim 65$ K/92 K in TiOCl (Refs. 4–8) and 27 K/48 K in TiOBr (Refs. 9–11) and surprisingly large singlet-triplet energy gap [$E_g \sim 430$ to 440 K in TiOCl (Refs. 4 and 12) and 150 K in TiOBr (Ref. 10)]. The origins and properties of the incommensurate spin-Peierls state between T_{C1} and T_{C2} have attracted particular attention to these compounds.

Both TiOBr and TiOCl crystallize into a FeOCl-type structure with an orthorhombic space group of $Pmmn$ at room temperature.^{13,14} This structure consists of buckled Ti-O bilayers in the ab plane, which are separated by double layers of either Br⁻ or Cl⁻ ions and stacked along the c axis. The additional reduction in effective dimensionality within the Ti-O bilayers, from two to one, is believed to arise from ordering of the Ti³⁺ orbital degrees of freedom.⁵ Spin-Peierls dimerization occurs along the crystallographic b axis and is driven by the direct exchange of Ti d_{xy} orbitals.⁵ High-temperature susceptibility measurements suggest that both TiOBr and TiOCl can be fit to a $S=1/2$ Heisenberg chain model, with nearest-neighbor exchange couplings of ~ 660 and 360 K, respectively.^{5,10,15}

In general, TiOBr has attracted considerably less attention than its sister compound TiOCl. This is largely due to the fact that it is more difficult to grow single crystals of TiOBr than TiOCl although it is also more challenging to work with TiOBr because it is extremely hygroscopic (even more so than its isostructural counterpart) and has substantially lower transition temperatures. All measurements to date seem to suggest that apart from a slight difference in energy scales, the two compounds behave almost identically—they have matching low-temperature phase diagrams and appear to be isostructural in each of the major phases. However, there are subtle differences between the lattice constants of the two materials, perhaps most notably in the ratio of the a and b

lattice constants which describe the Ti-O bilayers. While the room-temperature lattice parameters reported for TiOBr are $a=3.78$ Å, $b=3.49$ Å, and $c=8.53$ Å,¹⁰ those of TiOCl are $a=3.79$ Å, $b=3.38$ Å, and $c=8.03$ Å.¹³ Thus, while the a axis (i.e., interchain) spacing of the two compounds is almost identical, the b axis (i.e. intrachain) spacing is $\sim 3-4\%$ smaller in TiOCl. As a result, both the relative and absolute strength of the intrachain interactions are expected to be greater in TiOCl, giving rise to physical properties which are more strongly one dimensional in nature. This appears to be reflected in both the magnitude of the nearest-neighbor exchange coupling and the size of the singlet-triplet energy gap.

The critical behavior of spin-Peierls systems is a subject which has generated considerable interest and confusion over the past 30 years. Widely varying and often contradictory critical exponents have been reported for a number of spin-Peierls compounds. Early studies of CuGeO₃, the first inorganic spin-Peierls system, led to conflicting claims of tricritical,¹⁶⁻¹⁸ three-dimensional (3D),¹⁹⁻²¹ and mean-field-like²² critical behavior. Subsequent work²³ has revealed that much of this discrepancy can be attributed to the narrowness of the asymptotic critical region, and it has been shown that the system belongs to a conventional 3D universality class. Similarly, while the organic compounds MEM-(TCNQ)₂ and TTF-CuBDT were initially believed to exhibit mean-field-like critical behavior,^{24,25} more detailed measurements²⁶ suggest that these compounds correspond to 3D universality classes as well.

The critical behavior of the recently discovered Ti-based spin-Peierls compounds, TiOBr and TiOCl, has been less extensively studied but appears similarly enigmatic. To date there has been only one report of critical exponents for these systems, which placed the value of β for the continuous transition at T_{C2} (between the disordered pseudogap state and the incommensurate spin-Peierls state) between 0.10 ± 0.04 and 0.26 ± 0.09 in TiOBr.²⁷ Similar values of $\beta=0.15$ (Ref. 28) and $\beta=0.25$ (Ref. 11) can be extracted from other x-ray diffraction measurements on TiOCl and TiOBr although these results have not been explicitly quoted as critical exponents by the authors. This range of β values suggests some form of either quasi-2D or tricritical behavior at T_{C2} , a result which is somewhat surprising for a phase transition which is known to be driven by inherently three-dimensional spin-phonon interactions. For two compounds which have already been shown to exhibit behavior which significantly differs from the standard spin-Peierls scenario, this poses a very interesting question—is the critical behavior of these compounds truly distinct from that of CuGeO₃ and the organic spin-Peierls systems or is 3D universality one of the fundamental properties of any spin-Peierls transition? The need for a detailed study of the critical behavior of these systems has been further underlined by a recent claim based on symmetry analysis²⁹ that the transition at T_{C2} is intrinsically first order in nature, despite the rather substantial weight of experimental evidence to the contrary.^{4,5,7,8,11,27,28,30}

In this paper we report a detailed study of the critical properties of TiOBr. Using an approach which incorporates both standard power-law fits and modified power-law fits which include a first-order correction-to-scaling term, we

find that the transition at T_{C2} can be well described by conventional 3D universality classes. We offer a qualitative comparison which suggests that TiOCl also corresponds to a similar universality class and discuss the potential change in criticality which results when TiOCl is doped with nonmagnetic Sc ions. Our results indicate that the asymptotic critical regime in TiOBr is quite narrow, providing a natural explanation for the anomalously low values of β which have previously been reported in the literature. The ease with which our data can be fit to models of a continuous phase transition clearly contradicts arguments for the first-order nature of the spin-Peierls transition at T_{C2} .²⁹ In addition, we offer evidence that commensurate fluctuations, which inhabit the incommensurate spin-Peierls and pseudogap phases of TiOCl, are absent in TiOBr. We propose that this may reflect the weaker one dimensionality of the system and the greater importance of interchain interactions. Finally, we observe that the incommensurate and commensurate spin-Peierls states in TiOBr appear to be shifted in \mathbf{Q} space with respect to each other. This may be an indication that the structure of the incommensurate spin-Peierls state is more complex than previously assumed.

II. EXPERIMENTAL DETAILS

Single-crystal samples of TiOBr were prepared using the chemical-vapor-transport method. A more detailed description of the crystal-growth procedure has been reported elsewhere.⁹ The dimensions of the sample used in this experiment were approximately $4.0 \times 3.0 \times 0.5$ mm. The sample was mounted on the cold finger of a closed cycle refrigerator and aligned within a Huber four circle diffractometer. This sample environment provided a base temperature of ~ 7 K with temperature stability of better than ± 0.005 K. X-ray scattering measurements were performed using Cu-K α radiation ($\lambda=1.54$ Å) produced by an 18 kW rotating anode x-ray source with a vertically focusing pyrolytic graphite monochromator.

X-ray scattering scans were performed through several equivalent commensurate ordering wave vectors of the form $(H, K+1/2, L)$, where superlattice Bragg peaks are expected to arise as the result of spin-Peierls dimerization. Due to the thickness of our sample and the relatively short penetration depth of the wavelength being employed (~ 20 μm), these measurements were largely restricted to reflection geometry. Ultimately, our measurements focused around the $(0, 0.5, 6)$ position in reciprocal space, as it was here that the intensity of the superlattice Bragg peaks was found to be strongest. Scans were carried out along the H , K , and L directions in reciprocal space in order to characterize all of the relevant commensurate and incommensurate superlattice peaks. These measurements were repeated at several temperatures within each of the four major regions of the TiOBr phase diagram—below T_{C1} in the commensurate spin-Peierls phase, between T_{C1} and T_{C2} in the incommensurate spin-Peierls phase, between T_{C2} and T^* in the pseudogap phase, and above T^* in the paramagnetic phase.

Once the general features of the scattering at the superlattice peak positions had been well characterized, a more de-

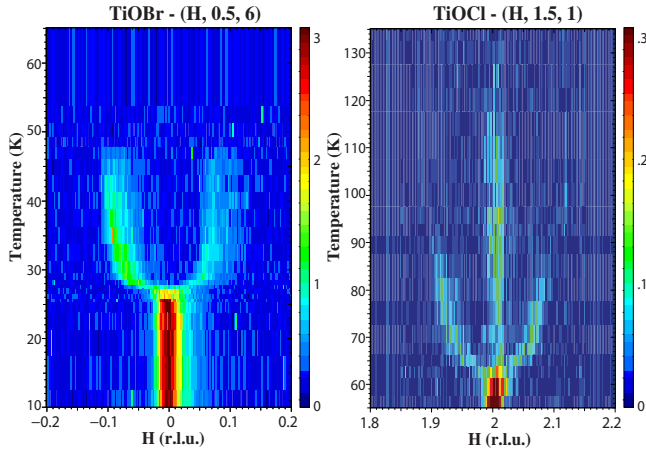


FIG. 1. (Color online) Color contour maps of x-ray scattering intensity as a function of temperature in TiOBr (left) and TiOCl (right). These maps are composed of H scans of the form $(H, 0.5, 6)$ and $(H, 1.5, 1)$, respectively. A high-temperature (150 K) background data set has been subtracted from the TiOCl data in order to eliminate higher-order wavelength contamination.

tailed study of the incommensurate scattering at $(H \pm \delta_H, K + 1/2, L)$ was performed close to T_{C2} in order to investigate the critical behavior of the system. In particular, a series of scans were taken through the incommensurate ordering wave vector at $(-\delta_H, 0.5, 6)$ to follow the temperature evolution of the incommensurate scattering intensity. To ensure that these measurements captured all of the relevant incommensurate scattering, two long scans were performed at every temperature—one scan in the H direction to locate the center of the incommensurate satellite peak, followed by a second scan in the K direction to obtain a measure of the integrated scattering intensity. Measurements were performed over a range of temperatures extending from ~ 11 K below the phase transition to ~ 3 K above the transition. The size of the temperature steps varied from as large as 0.25 K (more than 6 K away from T_{C2}) to as small as 0.05 K (within 1 K of T_{C2}). In order to check for the presence of thermal hysteresis at T_{C2} , two separate data sets were collected while warming and cooling through the transition temperature. As no observable difference could be found between the measurements obtained on warming and cooling, both sets of measurements will be treated as a single data set in the analysis which follows in Sec. III A.

III. RESULTS AND DISCUSSION

A. Critical behavior of TiOBr

Figure 1 shows two color contour plots, consisting of H scans collected for TiOBr (left panel) and TiOCl (right panel). Each of these maps is composed of a series of H scans performed through one of the superlattice peak positions—the $(0, 0.5, 6)$ position in the case of TiOBr and the $(2, 1.5, 1)$ position in the case of TiOCl. Note that in the case of TiOCl a high-temperature background data set, collected at $T = 150$ K, has been subtracted from each scan. This correction is necessary in order to eliminate weak $\lambda/2$ con-

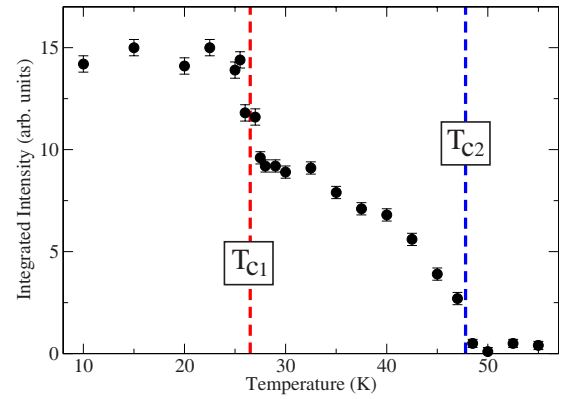


FIG. 2. (Color online) The temperature dependence of the integrated scattering intensity of the superlattice peaks observed at $(0, 0.5, 6)$ [below T_{C1} , in the commensurate SP phase] and $(\pm \delta_H, 0.5, 6)$ [above T_{C1} , in the incommensurate SP phase] in TiOBr. The discontinuous drop in scattering intensity at $T_{C1} \sim 27$ K is indicative of a first-order phase transition while the gradual decrease toward T_{C2} is consistent with a continuous phase transition.

tamination present in the incident x-ray beam, which can give rise to Bragg scattering at the superlattice peak positions. The $\lambda/2$ scattering at $(2, 1.5, 1)$ in TiOCl is comparable in strength to the weak λ scattering in the pseudogap phase (~ 0.1 counts/s) but it can be eliminated with a simple background subtraction due to its lack of temperature dependence. No higher-order wavelength contamination was observed at the $(0, 0.5, 6)$ position in TiOBr so a corresponding high-temperature background subtraction has not been performed.

The color contour maps in Fig. 1 offer a qualitative summary of the main features of the low-temperature phase diagram of the titanium oxyhalides. Below T_{C1} there is a dimerized, commensurate twofold superstructure, identified by a single superlattice peak at $(H, K + 1/2, L)$. Between T_{C1} and T_{C2} two incommensurate satellite peaks appear at the $(H \pm \delta_H, K + 1/2, L)$ positions, signifying the development of an incommensurately modulated version of the dimerized structure. The primary component of the incommensurate modulation lies along the H direction in reciprocal space, or the a axis in real space, which means that it runs perpendicular to the dimerized chains of Ti atoms in the spin-Peierls state. Note that additional commensurate scattering, which has been attributed to commensurate fluctuations,³¹ is visible between T_{C1} and T^* in TiOCl but not in TiOBr. This result will be discussed in greater detail in Sec. III C. For the present time it is worth noting that, if anything, the physical picture for TiOBr is simpler than that of its isostructural counterpart.

TiOBr is known to undergo two successive phase transitions at low temperatures—a continuous transition into an incommensurate spin-Peierls state at $T_{C2} \sim 48$ K, followed by a first-order transition into a commensurate spin-Peierls state at $T_{C1} \sim 27$ K. These two transitions are clearly illustrated in Fig. 2, which shows the temperature dependence of the integrated scattering intensity in the vicinity of the $(0, 0.5, 6)$ superlattice peak position. Below T_{C1} the scattering

intensity arises from the commensurate superlattice peak at $(0, 0.5, 6)$ while between T_{C1} and T_{C2} it originates from the incommensurate satellite peaks at $(\pm \delta_H, 0.5, 6)$. All of the scattering intensities provided in Fig. 2 were obtained by integrating over H scans of the form shown in Fig. 1. It should be noted that the intensity of the scattering which results from spin-Peierls dimerization is proportional to the square of the relevant atomic displacements and hence can be directly related to the square of the order parameters associated with the phase transitions at T_{C1} and T_{C2} . For this reason, the discontinuous jump in scattering intensity at T_{C1} is evidence for a first-order phase transition while the gradual decrease toward T_{C2} is indicative of a continuous phase transition. Both of these results are consistent with the generally accepted nature of the transitions at T_{C1} and T_{C2} .

Since the intensity of the dimerization scattering is proportional to the square of the order parameter, it is possible to extract a value for the critical exponent β from our x-ray diffraction data. As only the phase transition at T_{C2} is continuous, we will focus our attention on the critical behavior associated with the transition between the incommensurate spin-Peierls phase and the disordered pseudogap phase. In this case, the order parameter for the phase transition will be related to the intensity of the incommensurate satellite peaks which appear at the $(H \pm \delta_H, K + 1/2, L)$ wave vectors. The integrated scattering intensity of the $(-\delta_H, 0.5, 6)$ incommensurate peak, which was found to be the strongest of the experimentally accessible incommensurate peaks, was carefully determined by performing a series of H and K scans as described in Sec. II. The integrated scattering intensity was then fit to two different functional forms, a straight power law [Eq. (1)] and a modified power law which includes the first-order correction-to-scaling confluent singularity term [Eq. (2)].

$$I(t) = At^{2\beta} + \text{background}, \quad (1)$$

$$I(t) = At^{2\beta} \times (1 + Bt^\Delta) + \text{background}. \quad (2)$$

Here $t = (T - T_{C2})/T_{C2}$ is the reduced temperature while the value of the exponent Δ has been determined to be ~ 0.5 .^{32,33} Representative fits to the integrated intensity data using Eqs. (1) and (2) are provided in Fig. 3. The choice of two fit functions was motivated by previous studies on the critical behavior of CuGeO_3 (Ref. 23) which showed that the asymptotic critical region was extremely narrow, extending less than 0.5 K (or $\sim 4\%$) below T_{Sp} . In this region the length scale associated with fluctuations in the order parameter is greater than any of the other relevant length scales that occur in the system. Within the limit of the asymptotic critical regime it is expected that the order parameter should be accurately described by the simple power law provided in Eq. (1). Farther away from the transition temperature however, outside the asymptotic critical regime, other length scales in the system become significant and the behavior of the order parameter begins to deviate from this ideal form. It is this effect which was responsible for the wide variation between initially reported critical exponents for CuGeO_3 , and we propose that the same holds true in the case of TiOBr . In order to account for deviations from standard power-law behavior

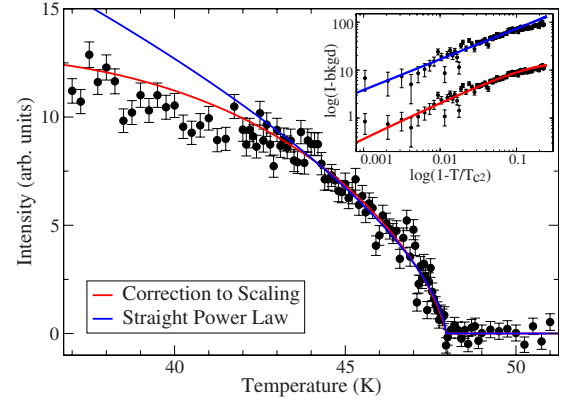


FIG. 3. (Color online) Fits to the integrated intensity of the incommensurate peak at $(-\delta_H, 0.5, 6)$ as a function of temperature. These fits were performed using all data collected above $T_i = 43$ K, employing both a straight power-law-fit function (blue, $\beta_{asy} = 0.32$) and a power law including the first-order correction-to-scaling confluent singularity term (red, $\beta_{avg} = 0.39$). In the inset the quality of these fits is shown on a logarithmic scale. The upper data set has been vertically offset for illustrative purposes.

farther away from T_{C2} , we can modify our original fit function to include the first-order correction-to-scaling confluent singularity term, as shown in Eq. (2). It should be noted that this correction is only the first term in a larger series expansion which describes the behavior of the order parameter beyond the limits of the asymptotic critical regime.³² As a means of testing the importance of higher-order terms in the expansion, a series of fits were performed including both the first and second-order correction-to-scaling terms. The addition of the second-order correction-to-scaling term was found to produce no significant improvement in the quality of the fits hence all higher-order corrections have been neglected in the analysis which follows.

One of the factors that complicates the accurate determination of critical exponents is the uncertainty inherent in simultaneously fitting both the critical exponent β and the transition temperature T_{C2} . As shown in Fig. 4, these two parameters are intimately related and the optimal value of β is strongly dependent on the appropriate choice of T_{C2} . This situation can be even further complicated by the presence of critical fluctuations, which are typically found in the vicinity of a continuous phase transition and can obscure the precise value of the transition temperature. Fortunately, as in the case of CuGeO_3 ,²³ the critical fluctuations around T_{C2} in TiOBr are quite difficult to observe. This is illustrated by the data provided in Fig. 3, which clearly shows a sharp drop in scattering intensity at T_{C2} with very little broadening or rounding near the transition. This makes TiOBr an excellent candidate for studies of critical behavior and should allow for a particularly accurate determination of β and T_{C2} .

The importance of the correction-to-scaling term is illustrated by the data provided in Fig. 5, which shows the effect of fitting range on the value of the critical exponents extracted from Eqs. (1) and (2). Here the fitting range is described in terms of the initial temperature, T_i , which represents the start of the fitting range and the lower temperature bound for the data points included in the fit. Since the upper

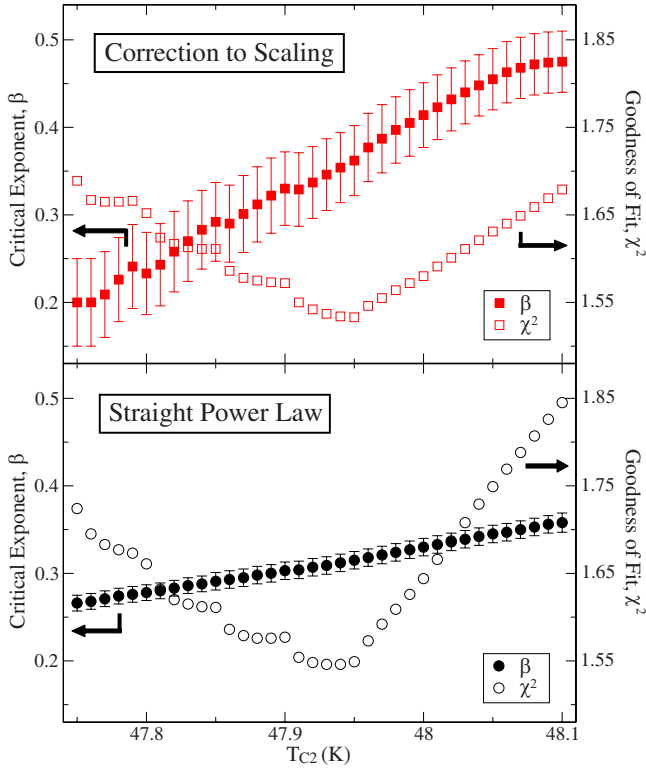


FIG. 4. (Color online) The dependence of the critical exponent β and goodness of fit parameter χ^2 on the transition temperature T_{C2} . The bottom panel contains fit parameters obtained using a straight power-law-fit function [as described by Eq. (1)] while the top panel shows parameters obtained from fits to a power law which includes the first-order correction-to-scaling term [as described by Eq. (2)]. Both sets of fits were performed using data collected above $T_i=43$ K.

bound for each fitting range was fixed at a final temperature of $T_f=51$ K, it follows that T_i can be taken as both a measure of the size of a given fitting range and an indication of how far a particular data set extends below the transition

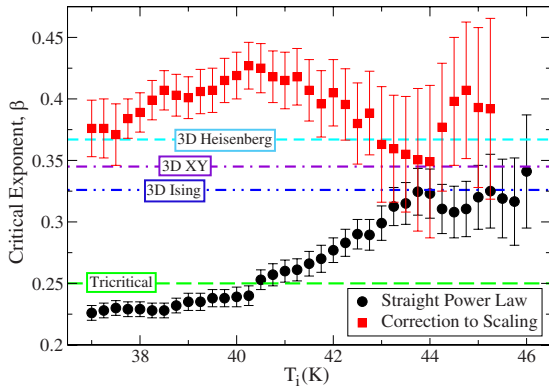


FIG. 5. (Color online) The value of the critical exponent β as a function of T_i , the start of the fitting range. The black circles represent values obtained from fits to a straight power law [Eq. (1)] while the red squares represent values obtained from fits to a power law which includes the first-order correction-to-scaling term [Eq. (2)]. The predicted values of β for the tricritical and conventional 3D universality classes have been provided as a guide to the eye.

temperature T_{C2} . Thus higher values of T_i correspond to smaller fitting ranges and describe fits to data which falls within (or at least close to) the asymptotic critical regime.

The exponents determined from fits to the straight power law of Eq. (1) are shown by the black circles in Fig. 5. Note that these exponents follow a clear trend, gradually increasing as T_i rises and the fitting range is reduced. Closer to the transition temperature (i.e., above $T_i \sim 43$ K) the values of β appear to level off, approaching an asymptotic limit of $\beta_{asy}=0.32 \pm 0.03$. This behavior suggests that the asymptotic critical regime in TiOBr is quite narrow, extending less than 5 K (or $\sim 9\%$) below T_{C2} . Within the critical region, where the critical behavior of the system can accurately be described by a standard power law, Eq. (1) provides consistent and reliable β values. Over larger fitting ranges, deviations from simple power-law behavior become increasingly significant and fits to Eq. (1) yield progressively worse values of β . Hence β_{asy} represents the most accurate value of β that can be obtained from Eq. (1), taken in the appropriate asymptotic limit close to T_{C2} .

The critical exponents obtained from fits to the modified power law of Eq. (2) are illustrated by the red squares in Fig. 5. In contrast to the results of the straight power-law fits, the values of β obtained from fits to Eq. (2) follow a relatively constant trend, with slow variation around $\beta_{avg}=0.39 \pm 0.05$. Thus we find that the introduction of the correction-to-scaling term compensates for deviations from standard power-law behavior beyond the asymptotic critical regime, significantly reducing the effect of fitting range on the resulting critical exponents. Ideally, one might expect that sufficiently close to T_{C2} the values of β from the two fit functions should converge. In practice, the quality and reliability of fits performed when T_i is within ~ 2 K of the phase transition are somewhat limited by the finite size of the data sets, which grow progressively smaller as T_i increases. However, bearing this restriction in mind, it is very encouraging to note that the values obtained for β_{asy} from Eq. (1) and β_{avg} from Eq. (2) are fully consistent within the bounds of experimental uncertainty.

From these results, we can conclude that the critical behavior of TiOBr can be described by one of the conventional 3D universality classes—3D Ising ($\beta=0.326$), 3D XY ($\beta=0.345$), or 3D Heisenberg ($\beta=0.367$). Both β_{asy} , the result obtained from straight power-law fits performed in the appropriate limit, and β_{avg} , the result obtained from modified power-law fits which included a correction-to-scaling term, are consistent with these values. Due to the relatively large size of our error bars, it is difficult to narrow down the list of potential universality classes to suggest a specific symmetry for the order parameter. One might only note that the best fits to the data are provided by the modified power law of Eq. (2), which leads to a critical exponent β_{avg} indicative of a 3D universality class with continuous symmetry, either XY or Heisenberg. This would be consistent with previous findings for conventional spin-Peierls systems such as CuGeO_3 (Ref. 23) and $\text{MEM}-(\text{TCNQ})_2$.²⁶

Another parameter of interest which can be extracted from our study of the critical properties of TiOBr is the value of the transition temperature, T_{C2} . Based on fits performed

using the straight power law of Eq. (1), the transition temperature was determined to have a best fit value of $T_{C2}=47.88 \pm 0.13$ K over all T_i , or a value of $T_{C2}=47.94 \pm 0.06$ K within the limits of the asymptotic critical regime ($T_i > 43$ K). Using the modified power law of Eq. (2) the transition temperature was found to be $T_{C2}=47.95 \pm 0.05$ K, and no evidence of any variation due to T_i was observed. This demonstrates another advantage of including the first-order correction-to-scaling term, in that it allows for a more reliable and precise determination of T_{C2} . As one might expect, the best fit values for the transition temperatures determined by Eq. (1) and Eq. (2) converge as T_i approaches the appropriate asymptotic limit. This provides another useful indication of the consistency between the two methods of analysis employed in this study.

It should be noted that the success of our analysis of the critical behavior in TiOBr provides extremely compelling evidence that the phase transition at T_{C2} is continuous, rather than first order, in nature. The fact that the integrated intensity of the superlattice peaks can be fit so well using a continuous model strongly contradicts the recent claims of Schonleber *et al.*²⁹ while lending support to earlier findings based on magnetic susceptibility,^{5,7} NMR,⁴ specific heat,^{7,8} thermal expansion,⁷ and x-ray diffraction measurements.^{11,27,28,30} There can be no confusing to the results of the present study with the previously reported critical exponents of $\beta=0.10$ to 0.26 ,²⁷ 0.15 ,²⁸ and 0.25 (Ref. 11) for TiOBr and TiOCl. However, our examination of the relationship between the fitting range employed and the resulting value of β provides a simple and straightforward explanation for how these anomalously low critical exponents may have come about—they are the result of fits performed to measurements collected outside the asymptotic critical regime. Strong support for this argument can be found in Ref. 27, which reports critical exponents obtained for TiOBr using two different fitting ranges. Both of the fitting ranges employed in this study (27–47 and 40–48 K) extend beyond the region we have identified as the asymptotic critical regime ($T_i > 43$ K), and the resulting critical exponents ($\beta=0.10 \pm 0.04$ and $\beta=0.26 \pm 0.09$) appear to show the same T_i dependence as the standard power-law data provided in Fig. 5.

The goodness of fit parameter, χ^2 , is plotted as a function of fitting range in Fig. 6. Similar to Fig. 5, this plot serves to emphasize the importance of considering correction-to-scaling terms when dealing with data sets which extend beyond the asymptotic critical regime. The most striking difference between the values of χ^2 obtained from Eqs. (1) and (2) emerges over large fitting ranges (i.e., for low values of T_i). For T_i less than 43 K, as the fitting range grows larger one can observe a gradual monotonic increase in the χ^2 values from the straight power-law fits. Again, this reflects the fact that outside the asymptotic critical regime a simple power-law form is no longer sufficient to describe the behavior of the order parameter. In contrast, the χ^2 values from fits to the modified power law which incorporates the first-order correction-to-scaling term remain small, and relatively constant, down to the lowest values of T_i . For small fitting ranges (i.e. for T_i greater than 44 K), the quality of fit decreases markedly for both fit functions. This is simply a re-

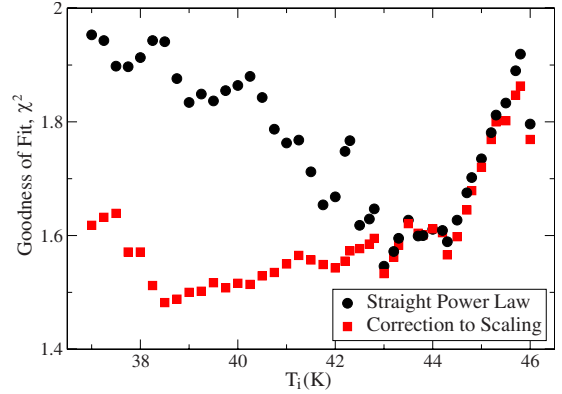


FIG. 6. (Color online) The goodness of fit parameter χ^2 as a function of T_i , the start of the fitting range. The black circles correspond to fits performed to a straight power-law-fit function [Eq. (1)] while the red squares correspond to fits to a power law which includes the first-order correction-to-scaling term [Eq. (2)].

sult of the reduced number of data points available for fits at higher T_i , which ultimately becomes the limiting factor for the accuracy of the fits in this regime. More generally, it is important to note that for any value of T_i the goodness of fit is always better when the data is fit to Eq. (2) rather than Eq. (1). In other words, the correction-to-scaling fits consistently offer a better description of the data than a straight power law, regardless of the fitting range chosen.

B. Implications for TiOCl

Having completed our analysis of the critical properties of TiOBr, it is natural that we next turn our attention to what our results can suggest about the critical behavior of TiOCl. While we lack sufficient data to perform the analysis necessary to precisely determine the value of β for TiOCl, we can clearly demonstrate that the critical exponents determined in the previous section provide a very convincing description of recently reported measurements on TiOCl.³¹

As illustrated by the color contour maps provided in Fig. 1, the low-temperature phase diagram of TiOCl is considerably more complicated than that of TiOBr. In particular, TiOCl is distinguished by the presence of commensurate fluctuations which persist from T_{C1} up to T^* , throughout both the incommensurate spin-Peierls and pseudogap phases. However, since the order parameter associated with the transition at T_{C2} is strictly related to the intensity of the incommensurate satellite peaks, rather than the sum of all dimerization scattering, it is only the incommensurate scattering at $(H \pm \delta_H, K + 1/2, L)$ which must be considered when studying the critical behavior of TiOCl.

The upper panel of Fig. 7 shows the temperature dependence of the integrated scattering intensity of the $(2 \pm \delta_H, 1.5, 1)$ incommensurate satellite peaks in TiOCl. These intensities were obtained by integrating over small \mathbf{Q} ranges around the incommensurate ordering wave vectors in H scans similar to those used to construct the color contour maps of Fig. 1. The data were fit to a standard power law, as described by Eq. (1), although due to the low density of points near T_{C2} the value of the transition temperature was

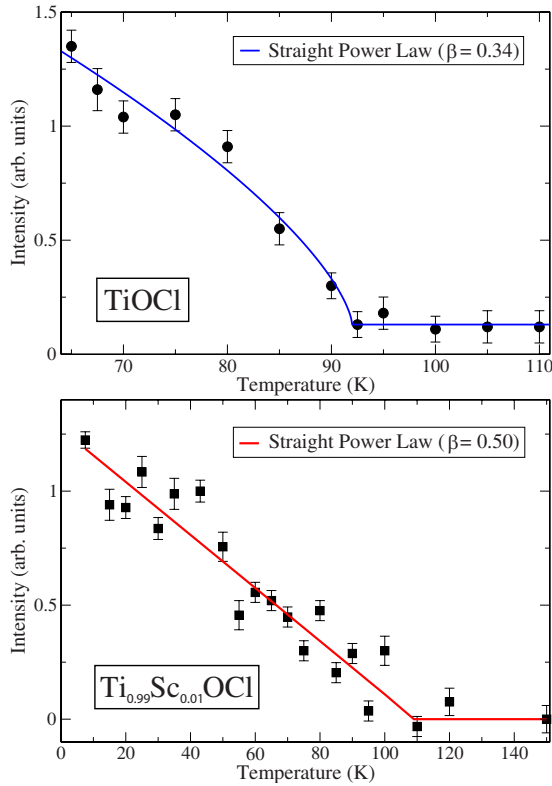


FIG. 7. (Color online) The temperature dependence of the integrated scattering intensity at the $(2 \pm \delta_H, 1.5, 1)$ superlattice peak position in TiOCl (top) and $\text{Ti}_{0.99}\text{Sc}_{0.01}\text{OCl}$ (bottom). These intensities have been obtained by integrating over H scans of the form shown in the color contour maps of Fig. 1. The TiOCl data set can be well described by a straight power-law fit which is consistent with conventional 3D universality ($\beta=0.34$, shown in blue) while the $\text{Ti}_{0.99}\text{Sc}_{0.01}\text{OCl}$ data set is much better fit by a power-law function consistent with mean-field-like behavior ($\beta=0.50$, shown in red).

fixed at 92 K. This fixed value of T_{C2} is consistent with previously reported susceptibility,^{5,7} heat capacity,^{7,8} NMR,⁴ and x-ray diffraction measurements^{6,28,31} for TiOCl. The resulting line of best fit (indicated by the solid blue line in the upper panel of Fig. 7) corresponds to a critical exponent of $\beta=0.34 \pm 0.04$.³⁴ It should be noted that this value of β is consistent with the theoretical predictions of the 3D Ising, 3D XY, and 3D Heisenberg models, indicating that the transition in TiOCl can be well described by any of the conventional 3D universality classes. Furthermore, there is excellent agreement between the value of $\beta=0.34 \pm 0.04$ for TiOCl and the value of $\beta_{asy}=0.32 \pm 0.03$ obtained earlier from power-law fits to the TiOBr data. In fact, this relatively simple estimate for β also agrees quite well with the value of $\beta_{avg}=0.39 \pm 0.05$ obtained for TiOBr using the modified power law of Eq. (2), in spite of the fact that the large fitting range used for the TiOCl data set almost certainly extends well beyond the asymptotical critical regime.

Unfortunately, due to the small size and low point density of the TiOCl data set, it is difficult to extract any meaningful parameters from fits performed using the modified power law described by Eq. (2). While a best fit value of β can still be determined from the modified power law, the resulting

error bars are sufficiently large that no useful constraints can be placed on the universality class of the system. This is chiefly due to the larger number of fit parameters present in Eq. (2). On a purely qualitative level, it is worth noting that the function in Eq. (2) can fit the TiOCl data very well using a fixed transition temperature of $T_{C2}=92$ K and the critical exponent of $\beta_{avg}=0.39$ determined for TiOBr. By eye, such a fit is almost indistinguishable from the solid blue curve which represents the best fit line for Eq. (1) hence it has been omitted from the upper panel of Fig. 7.

A very interesting comparison can also be made using previous x-ray data collected on $\text{Ti}_{0.99}\text{Sc}_{0.01}\text{OCl}$, a compound in which Sc doping has been shown to suppress commensurate spin-Peierls order to below at least $T \sim 7$ K.³⁵ The temperature dependence of the integrated intensity of the incommensurate scattering at $(2 \pm \delta_H, 1.5, 1)$ in $\text{Ti}_{0.99}\text{Sc}_{0.01}\text{OCl}$ is provided in the bottom panel of Fig. 7. If we attempt to fit this data using the simple power-law-fit function described by Eq. (1) we find that the critical behavior of Sc-doped TiOCl is clearly different from that of either pure TiOCl or TiOBr. The best power-law fit to the $\text{Ti}_{0.99}\text{Sc}_{0.01}\text{OCl}$ data (illustrated by the solid red line in the bottom panel of Fig. 7) corresponds to a critical exponent of $\beta=0.50 \pm 0.07$ and a transition temperature of $T_{C2}=109 \pm 6$ K. This value of β is consistent with the exponent predicted by mean-field theory ($\beta=0.5$), and is incompatible with the theoretical predictions for any of the conventional 3D universality classes. In addition, the value of β for $\text{Ti}_{0.99}\text{Sc}_{0.01}\text{OCl}$ is dramatically different from the critical exponents that we determined for TiOCl and TiOBr. This difference in critical behavior is evident even from the raw data provided in Fig. 7. The intensity of the incommensurate scattering in $\text{Ti}_{0.99}\text{Sc}_{0.01}\text{OCl}$ appears to grow linearly with decreasing temperature while the scattering in TiOCl clearly follows a sublinear power-law trend.

It is also instructive to compare these results to previous studies on the critical properties of CuGeO_3 .^{23,36} It has been well established that in both pure CuGeO_3 and CuGeO_3 doped with ions of similar ionic radius the critical behavior of the spin-Peierls transition can be described by one of the conventional 3D universality classes with continuous symmetry (such as 3D XY or 3D Heisenberg). However, when CuGeO_3 is doped with ions of larger ionic radius, by substituting Cd^{2+} for Cu^{2+} or Ga^{4+} for Ge^{4+} , for example, the observed universality class is found to change toward mean-field-like behavior. This effect appears to have little or no concentration dependence and is believed to be related to the presence of local strain fields induced by the larger dopant ions. The significance of local strain effects on the behavior of the order parameter is reasonably intuitive given both the magnetoelastic nature of the spin-Peierls transition and the underlying importance of lattice properties in the spin-Peierls materials. Hence, if the dopant ion is smaller or of comparable size to the ion it is replacing (i.e. if Δ_{ion} is less than roughly +3% of the ionic radius) the universality class of the transition remains unchanged. Alternatively, for large, positive changes in ionic radius (i.e. Δ_{ion} is on the order of +9% or more) there appears to be a distinct change in critical properties. The difference in ionic radius between Sc^{3+} and Ti^{3+} corresponds to $\Delta_{ion}=+11\%$. Thus, the change in critical behavior we observe between TiOCl and $\text{Ti}_{0.99}\text{Sc}_{0.01}\text{OCl}$ ap-

appears fully consistent with lessons learned from studies of doped CuGeO_3 .³⁶ Although further study is still required to provide a more detailed understanding of this phenomenon, on the basis of these results it is certainly tempting to conclude that doping-induced changes in criticality are a fundamental property associated with the spin-Peierls transition.

A second significant feature which arises from the comparison of the TiOCl and $\text{Ti}_{0.99}\text{Sc}_{0.01}\text{OCl}$ data sets is the change in transition temperature, T_{C2} , which is induced by Sc doping. As shown by Fig. 7, the value of T_{C2} is considerably higher in $\text{Ti}_{0.99}\text{Sc}_{0.01}\text{OCl}$ than in TiOCl with the fitted value of $T_{C2}=109\pm 6$ K for the doped sample lying well above the accepted value of 92 ± 1 K for the pure sample. This result is quite surprising, particularly when one considers that doping has been universally found to suppress the spin-Peierls transition temperature in CuGeO_3 . One possible explanation for this effect is that since no commensurate fluctuations are observed below $T^*\sim 135$ K in $\text{Ti}_{0.99}\text{Sc}_{0.01}\text{OCl}$, the $T\sim 109$ K temperature scale actually corresponds to the appropriately lowered equivalent of T^* from TiOCl . This argument is supported by the fact that the incommensurate scattering in $\text{Ti}_{0.99}\text{Sc}_{0.01}\text{OCl}$ is very broad, implying that the length scale for correlations in the doped compound is even shorter than that of the commensurate fluctuations in pure TiOCl . In addition, the $\sim 20\%$ drop between the 135 and 109 K temperature scales is quite consistent with the 15–45 % suppression of T_{SP} per 1% concentration of dopants which has been reported in the literature for doped CuGeO_3 .^{37–44}

C. Details of the incommensurate structure of TiOBr

As discussed earlier, there are several respects in which the low-temperature scattering of TiOBr differs from that of its isostructural counterpart TiOCl . The chief feature which distinguishes these two compounds from each other is the presence of commensurate fluctuations, which are clearly evident in TiOCl (Ref. 31) but appear to be absent in TiOBr . In TiOCl , these commensurate fluctuations can be observed throughout both the incommensurate spin-Peierls phase (from T_{C1} to T_{C2}) and the pseudogap phase (from T_{C2} to T^*), as shown in the right panel of Fig. 1. The commensurate scattering is not resolution limited above T_{C1} , indicating that it does not correspond to static long-range order. However, the width of the scattering implies the presence of relatively long correlation lengths on the order of ~ 100 Å or more. Interestingly, between T_{C1} and T_{C2} the commensurate fluctuations appear to both coexist with and compete against the incommensurate scattering at $(H\pm\delta_H, K+1/2, L)$. The commensurate fluctuations also appear to be shifted in \mathbf{Q} space with respect to both the accompanying incommensurate scattering and the long-range ordered commensurate state below T_{C1} with observed peak positions displaced along both the H and K directions.

In TiOBr , we find no indication of commensurate fluctuations in either the incommensurate spin-Peierls state (between T_{C1} and T_{C2}) or the pseudogap state (between T_{C2} and T^*). This was the case at each of the seven different commensurate ordering wave vectors investigated in this study.

One possible explanation for the absence of commensurate fluctuations in TiOBr may arise from the subtle differences between the structures of TiOCl and TiOBr . While the distance between neighboring dimerized chains of Ti atoms (i.e., the interchain spacing, related to the a lattice parameter) is almost identical in both compounds, the distance between neighboring Ti atoms on the same dimerized chain (i.e. the intrachain spacing, given by the b lattice parameter) is approximately 4% larger in TiOBr . As a result of this change in lattice parameters, TiOBr appears to be less one dimensional than its isostructural counterpart. The difference is clearly evident from the magnetic-susceptibility measurements reported for the two compounds,^{5,10,15} both in terms of the magnitude of the nearest-neighbor exchange coupling (which is estimated to be $\sim 45\%$ smaller in TiOBr) and the observed deviations from the idealized Bonner-Fisher curve (which suggest significantly stronger interchain couplings in TiOBr). Doping studies on TiOCl (Ref. 35) indicate that the relative strengths of the intrachain and interchain interactions are intimately connected with the stability of the incommensurate structure. Thus, if the interchain coupling is stronger with respect to the intrachain coupling in TiOBr than it is in TiOCl then it could easily lead to suppression of commensurate fluctuations (as in $\text{Ti}_{0.99}\text{Sc}_{0.01}\text{OCl}$), stabilization of the incommensurate structure, and a loss of phase coexistence between T_{C1} and T_{C2} .

It should be emphasized that the lack of observable commensurate fluctuations in the present study does not necessarily imply that such scattering is completely absent in TiOBr . In fact, the difficulty in detecting such a weak, broad feature—particularly one which may be slightly shifted in \mathbf{Q} space—is clearly underscored by the number of x-ray diffraction studies which previously failed to observe such commensurate fluctuations in TiOCl . It should also be noted that the $(2, 1.5, 1)$ wave vector, where the commensurate scattering was found to be strongest in TiOCl , was experimentally inaccessible in this study. Thus, there remains a possibility that stronger commensurate fluctuations could still be found in TiOBr at other, as of yet unstudied, positions in reciprocal space. Further work is needed to provide a more thorough understanding of this intriguing difference between the TiOX spin-Peierls systems.

Our measurements in the incommensurate spin-Peierls phase also reveal an interesting property of the incommensurate modulation in TiOBr . In addition to the primary component of the incommensurate modulation wave vector which runs along the H direction (perpendicular to the direction of the dimerized chains), a smaller secondary component of the modulation has been reported along the K direction (parallel to the dimerized chains) in both TiOCl and TiOBr . The magnitude of the K component of the incommensurate modulation, δ_K , increases monotonically between T_{C1} and T_{C2} , reaching a maximum value of ~ 0.015 r.l. unit in both compounds.^{27,28} Even though the experimental resolution of our present study is too broad to fully resolve the distinct incommensurate satellite peaks which should arise from the K component of the incommensurate modulation, we would anticipate that the effects of this secondary incommensuration should be manifested as a significant broadening of the superlattice peaks along the K direction. However,

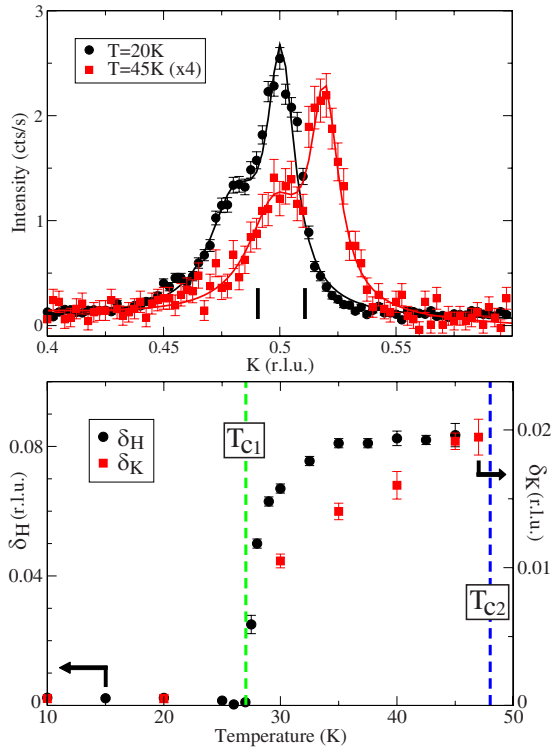


FIG. 8. (Color online) Representative K scans performed through the $(-\delta_H, 0.5, 6)$ superlattice peak in TiOBr (top). The black circles correspond to data collected within the commensurate spin-Peierls state ($T=20$ K, $\delta_H=0$) while the red squares correspond to data collected within the incommensurate spin-Peierls state ($T=45$ K, $\delta_H \sim 0.08$). For illustrative purposes the intensity of the $T=45$ K data set has been scaled by a factor of four. The solid lines represent fits to a simple two-Gaussian function. Note that the peaks in the incommensurate phase are shifted in \mathbf{Q} space relative to those of the commensurate phase. The temperature dependence of the shift, δ_K , is shown in the bottom panel, along with the H component of the incommensurate modulation wave vector, δ_H .

as the representative K scans provided in the upper panel of Fig. 8 clearly demonstrate, there is no observable change in the width of the $(-\delta_H, 0.5, 6)$ superlattice peak between the commensurate and incommensurate spin-Peierls phases. What these K scans do reveal is an obvious shift in the position of the incommensurate satellite peaks above T_{C1} relative to the commensurate superlattice peaks below T_{C1} . The temperature dependence of this shift in \mathbf{Q} space, which we will call δ_K , is illustrated in the bottom panel of Fig. 8.

Note that superlattice reflections are observed at $(\pm \delta_H, 0.5 + \delta_K, 6)$ positions but not at $(\pm \delta_H, 0.5 - \delta_K, 6)$. In this respect, our K shift clearly differs from the previously reported K incommensuration, which when coupled with the incommensuration along H should produce a set of four incommensurate peaks at $(\pm \delta_H, 0.5 \pm \delta_K, 6)$. Furthermore, there are indications that this K shift exhibits some form of systematic \mathbf{Q} dependence. At the $(0, 0.5, 6)$, $(0, -0.5, 6)$, and $(1, 0.5, 6)$ positions in reciprocal space we find the incommensurate peaks shift to higher \mathbf{Q} positions (i.e., to $K + \delta_K$) while for $(0, 0.5, 5)$ and $(1, 0.5, 5)$ we find the peaks shift to lower \mathbf{Q} (i.e., to $K - \delta_K$). At the $(0, 1.5, 6)$ wave vector no discernable K shift could be observed. Based on alignment

scans performed through several nearby structural Bragg peaks we can conclude that this shift in \mathbf{Q} space is not simply the result of a change in the lattice constants of the material. Interestingly, the shift in \mathbf{Q} space appears to have a different temperature dependence than the H component of the incommensurate modulation wave vector, as shown in the bottom panel of Fig. 8. While δ_H and δ_K both increase steadily with temperature above T_{C1} , δ_H approaches saturation by ~ 35 K while δ_K continues to grow until the system reaches T_{C2} . If the observed K shift was simply equivalent to the K component of the incommensurate modulation wave vector it seems surprising that it would not follow the same temperature evolution as δH .

This effect has also been observed in recent x-ray measurements performed by Sasaki *et al.*,²⁷ which show that the incommensurate scattering at $(\pm \delta_H, 2.5, 0)$ is shifted in the K direction (towards lower \mathbf{Q}) with respect to the commensurate scattering at $(0, 2.5, 0)$. Furthermore, the magnitude and temperature dependence of this shift in \mathbf{Q} space are almost identical to that reported here. Curiously, in spite of the absence of additional satellite peaks at $(\pm \delta_H, 2.5 \pm \delta_K, 0)$, Sasaki *et al.* treat this behavior as equivalent to the K incommensuration reported by van Smaalen *et al.*¹¹ This assumption is not completely unjustified, particularly since recent x-ray diffraction measurements on TiOCl (Ref. 28) have shown that in some cases there can be dramatic differences between the observed scattering intensities of neighboring pairs of incommensurate satellite peaks. These intensity variations have been attributed to changes in structure factor resulting from phase shifts between the modulations of neighboring chains of Ti atoms in the unit cell. In TiOCl these intensity differences have been found to be up to 1–2 orders of magnitude in size.²⁸ If the scattering at the $(\pm \delta_H, 0.5 - \delta_K, 6)$ position in TiOBr is suppressed by a similar factor then it could be too weak to be detectable with our current experimental configuration. However, while it is possible that weak superlattice scattering could be obscured by experimental background in the present study, it is less likely that this same problem would also have affected the results of Sasaki *et al.* due to the much higher signal-to-noise ratio available at synchrotron x-ray sources.

An alternative possibility, which naturally arises from the parallels between TiOCl and TiOBr, is that the K shift between the commensurate and incommensurate scattering in TiOBr is an analog of the \mathbf{Q} shift between the commensurate fluctuations and long-range ordered commensurate/incommensurate scattering in TiOCl. The magnitude of the \mathbf{Q} shift reported for the commensurate fluctuations in TiOCl (Ref. 31) is very similar to the size of the K shift we observe in TiOBr, and it is clear that both of these features are intimately connected with the first-order phase transition at T_{C1} . Thus, the shift in \mathbf{Q} space between the commensurate and incommensurate scattering in TiOBr could represent a distinctly different effect from the K component of the incommensurate modulation. In this case, the K shift could reflect changes in the balance of interchain and intrachain interactions at T_{C1} . Hence, below and above T_{C1} the ratio of relevant interaction strengths favors commensurate and incommensurate modulations of the dimerized structure with two slightly different wave vectors. It is difficult to comment on

the specific implications of these \mathbf{Q} shifts without further, and more thorough, study of additional superlattice peak positions. However, this result may provide an indication that the structure of the incommensurate spin-Peierls state of TiOBr may be more complex than previously assumed.

IV. CONCLUSIONS

In conclusion, we have performed a detailed study of the critical properties of TiOBr. While the spin-Peierls behavior of this system appears to be unconventional in a number of respects, the critical properties of the system can be very well described by conventional 3D universality classes. This finding is consistent with previous results obtained from studies performed on other spin-Peierls systems such as MEM-(TCNQ)₂ (Ref. 26) and CuGeO₃.²³ By analyzing our data using a simple power-law-fit function we determined that the critical exponent associated with the transition at T_{C2} approaches a value of $\beta_{asy}=0.32 \pm 0.03$ in the appropriate asymptotic critical regime. The strong dependence of β on the size of the fitting range suggests that the asymptotic critical region in TiOBr is quite narrow, as in CuGeO₃.²³ This provides an explanation for the apparently contradictory critical exponents that have previously been reported for this compound. The narrowness of the critical regime can be accounted for by employing a modified power-law-fit function which includes the first-order correction-to-scaling confluent singularity term. Using this approach we obtain a value of $\beta_{avg}=0.39 \pm 0.05$, a result which is consistent with both the 3D XY and 3D Heisenberg universality classes.

Based on a simple, primarily qualitative comparison, we argue that TiOCl, the isostructural cousin of TiOBr, can also be well described by one of the conventional 3D universality classes. More detailed studies would still be required in order

to offer a more quantitative description of the critical behavior of TiOCl or to further narrow down the list of potential universality classes for the transition. However, this result appears to add growing weight to the notion that the spin-Peierls transition is by nature a conventional three-dimensional phase transition, whether it is realized in organic or inorganic systems or even in the unconventional titanium oxyhalides. Applying the same approach to measurements performed on Ti_{0.99}Sc_{0.01}OCl we find evidence that Sc doping induces a fundamental change in the critical properties of the transition at T_{C2} . We suggest that this effect is likely caused by the presence of local lattice strains which arise due to the significantly larger ionic radius of the Sc³⁺ dopant ions.

In addition, we describe several interesting features of the incommensurate structure of TiOBr between T_{C1} and T_{C2} . Our measurements reveal no evidence for commensurate fluctuations of the type observed in the incommensurate spin-Peierls and pseudogap phases of TiOCl. This result may reflect the weaker one-dimensional properties of TiOBr, and in particular, the substantially smaller size of the intrachain interaction. We also observe that the commensurate and incommensurate structures are shifted in \mathbf{Q} space with respect to one another with a displacement along the K direction that steadily grows between T_{C1} and T_{C2} . We hope that these measurements will help to guide and inform future theoretical and experimental studies of these novel spin-Peierls systems.

ACKNOWLEDGMENTS

The authors would like to acknowledge helpful discussions with T. Imai, J. P. Castellán, J. Ruff, and A. Aczel. This work was supported by NSERC of Canada and NSC of Taiwan.

-
- ¹J. W. Bray, L. V. Interrante, I. S. Jacobs, and J. C. Bonner, in *Extended Linear Chain Compounds*, edited by J. S. Miller (Plenum, New York, 1983), Vol. 3, p. 353, and references therein.
- ²B. van Bodegom, B. C. Larson, and H. A. Mook, *Phys. Rev. B* **24**, 1520 (1981)
- ³M. Hase, I. Terasaki, and K. Uchinokura, *Phys. Rev. Lett.* **70**, 3651 (1993); J. P. Pouget, L. P. Regnault, M. Ain, B. Hennion, J. P. Renard, P. Veillet, G. Dhalenne, and A. Revcolevschi, *ibid.* **72**, 4037 (1994).
- ⁴T. Imai and F. C. Chou, arXiv:cond-mat/0301425 (unpublished); S. R. Saha, S. Golin, T. Imai, and F. C. Chou, *J. Phys. Chem. Solids* **68**, 2044 (2007).
- ⁵A. Seidel, C. A. Marianetti, F. C. Chou, G. Ceder, and P. A. Lee, *Phys. Rev. B* **67**, 020405(R) (2003).
- ⁶A. Krimmel, J. Stempffer, B. Bohnenbuck, B. Keimer, M. Hoinkis, M. Klemm, S. Horn, A. Loidl, M. Sing, R. Claessen, and M. v. Zimmermann, *Phys. Rev. B* **73**, 172413 (2006).
- ⁷R. Ruckamp, J. Baier, M. Kriener, M. W. Haverkort, T. Lorenz, G. S. Uhrig, L. Jongen, A. Moller, G. Meyer, and M. Gruninger, *Phys. Rev. Lett.* **95**, 097203 (2005).
- ⁸J. Hemberger, M. Hoinkis, M. Klemm, M. Sing, R. Claessen, S. Horn, and A. Loidl, *Phys. Rev. B* **72**, 012420 (2005).
- ⁹P. Lemmens, K. Y. Choi, R. Valenti, T. Saha-Dasgupta, E. Abel, Y. S. Lee, and F. C. Chou, *New J. Phys.* **7**, 74 (2005).
- ¹⁰T. Sasaki, M. Mizumaki, T. Nagai, T. Asaka, K. Kato, M. Takata, Y. Matsui, and J. Akimitsu, *J. Phys. Soc. Jpn.* **74**, 2185 (2005).
- ¹¹S. van Smaalen, L. Palatinus, and A. Schonleber, *Phys. Rev. B* **72**, 020105(R) (2005).
- ¹²P. J. Baker, S. J. Blundell, F. L. Pratt, T. Lancaster, M. L. Brooks, W. Hayes, M. Isobe, Y. Ueda, M. Hoinkis, M. Sing, M. Klemm, S. Horn, and R. Claessen, *Phys. Rev. B* **75**, 094404 (2007).
- ¹³H. Schafer, F. Wartenpfehl, and E. Weise, *Z. Anorg. Allg. Chem.* **295**, 268 (1958).
- ¹⁴H. G. von Schnering, M. Collin, and M. Hassheider, *Z. Anorg. Allg. Chem.* **387**, 137 (1972).
- ¹⁵C. Kato, Y. Kobayashi, and M. Sato, *J. Phys. Soc. Jpn.* **74**, 473 (2005).
- ¹⁶Q. J. Harris, Q. Feng, R. J. Birgeneau, K. Hirota, K. Kakurai, J. E. Lorenzo, G. Shirane, M. Hase, K. Uchinokura, K. Kojima, I. Tanaka, and Y. Shibuya, *Phys. Rev. B* **50**, 12606 (1994).
- ¹⁷M. Fujita, M. Arai, K. Ubukata, H. Ohta, M. Mino, M. Mo-

- tokawa, K. Knight, R. Ibberson, J. B. Forsyth, S. M. Bennington, O. Akimitsu, and J. Fujita, *Physica B* **213-214**, 288 (1995).
- ¹⁸M. Saint-Paul, P. Monceau, and A. Revcolevschi, *Solid State Commun.* **93**, 7 (1995).
- ¹⁹Q. J. Harris, Q. Feng, R. J. Birgeneau, K. Hirota, G. Shirane, M. Hase, and K. Uchinokura, *Phys. Rev. B* **52**, 15420 (1995).
- ²⁰H. Winkelmann, E. Gamper, B. Buchner, M. Braden, A. Revcolevschi, and G. Dhalenne, *Phys. Rev. B* **51**, 12884 (1995).
- ²¹T. Lorenz, U. Ammerahl, T. Auweiler, B. Buchner, A. Revcolevschi, and G. Dhalenne, *Phys. Rev. B* **55**, 5914 (1997).
- ²²R. J. Birgeneau, V. Kiryukhin, and Y. J. Wang, *Phys. Rev. B* **60**, 14816 (1999).
- ²³M. D. Lumsden, B. D. Gaulin, H. Dabkowska, and M. L. Plummer, *Phys. Rev. Lett.* **76**, 4919 (1996); M. D. Lumsden, B. D. Gaulin, and H. Dabkowska, *Phys. Rev. B* **57**, 14097 (1998).
- ²⁴S. Huizinga, J. Kommandeur, G. A. Sawatzky, B. T. Thole, K. Kopinga, W. J. M. de Jonge, and J. Roos, *Phys. Rev. B* **19**, 4723 (1979).
- ²⁵D. E. Moncton, R. J. Birgeneau, L. V. Interrante, and F. Wudl, *Phys. Rev. Lett.* **39**, 507 (1977).
- ²⁶M. D. Lumsden and B. D. Gaulin, *Phys. Rev. B* **59**, 9372 (1999).
- ²⁷T. Sasaki, M. Mizumaki, T. Nagai, T. Asaka, K. Kato, M. Takata, Y. Matsui, and J. Akimitsu, arXiv:cond-mat/0509358 (unpublished).
- ²⁸E. T. Abel, K. Matan, F. C. Chou, E. D. Isaacs, D. E. Moncton, H. Sinn, A. Alatas, and Y. S. Lee, *Phys. Rev. B* **76**, 214304 (2007).
- ²⁹A. Schonleber, G. Shcheka, and S. van Smaalen, *Phys. Rev. B* **77**, 094117 (2008).
- ³⁰M. Shaz, S. van Smaalen, L. Palatinus, M. Hoinkis, M. Klemm, S. Horn, and R. Claessen, *Phys. Rev. B* **71**, 100405(R) (2005).
- ³¹J. P. Clancy, B. D. Gaulin, K. C. Rule, J. P. Castellán, and F. C. Chou, *Phys. Rev. B* **75**, 100401(R) (2007).
- ³²A. Aharony and G. Ahlers, *Phys. Rev. Lett.* **44**, 782 (1980).
- ³³J. C. Le Guillou and J. Zinn-Justin, *Phys. Rev. Lett.* **39**, 95 (1977).
- ³⁴It should be noted that because we have fixed the value of T_{C2} at 92 K we have effectively neglected any systematic error in the value of β due to the uncertainty in the transition temperature. With systematic error, the uncertainty in β is likely to be greater than ± 0.04 for TiOCl.
- ³⁵J. P. Clancy, B. D. Gaulin, J. P. Castellán, K. C. Rule, and F. C. Chou, *Phys. Rev. B* **78**, 014433 (2008).
- ³⁶M. D. Lumsden, B. D. Gaulin, and H. Dabkowska, *Phys. Rev. B* **58**, 12252 (1998).
- ³⁷M. Hase, I. Terasaki, Y. Sasago, K. Uchinokura, and H. Obara, *Phys. Rev. Lett.* **71**, 4059 (1993).
- ³⁸S. B. Oseroff, S. W. Cheong, B. Aktas, M. F. Hundley, Z. Fisk, and L. W. Rupp, Jr., *Phys. Rev. Lett.* **74**, 1450 (1995).
- ³⁹J. P. Schoeffel, J. P. Pouget, G. Dhalenne, and A. Revcolevschi, *Phys. Rev. B* **53**, 14971 (1996).
- ⁴⁰M. C. Martin, M. Hase, K. Hirota, G. Shirane, Y. Sasago, N. Koide, and K. Uchinokura, *Phys. Rev. B* **56**, 3173 (1997).
- ⁴¹B. Grenier, J.-P. Renard, P. Veillet, C. Paulsen, G. Dhalenne, and A. Revcolevschi, *Phys. Rev. B* **58**, 8202 (1998).
- ⁴²K. Manabe, H. Ishimoto, N. Koide, Y. Sasago, and K. Uchinokura, *Phys. Rev. B* **58**, R575 (1998).
- ⁴³P. E. Anderson, J. Z. Liu, and R. N. Shelton, *Phys. Rev. B* **56**, 11014 (1997).
- ⁴⁴T. Masuda, A. Fujioka, Y. Uchiyama, I. Tsukada, and K. Uchinokura, *Phys. Rev. Lett.* **80**, 4566 (1998); Y. J. Wang, V. Kiryukhin, R. J. Birgeneau, T. Masuda, I. Tsukada, and K. Uchinokura, *ibid.* **83**, 1676 (1999).